



Branchin' Out

The Benefits of Trees

We all like having trees around us simply, because, they make life more pleasant. It is a fact that people respond to the presence of trees beyond simply an aesthetic pleasure. Trees make us feel serene, peaceful, restful and tranquil. The stature, strength and endurance of trees give them a cathedral like quality. Because of the potential for long life, trees are frequently planted as living memorials.

Even though trees may be private property, their size often makes them part of the community as well. Since trees occupy a considerable amount of space planning is required if both you and your neighbors are to benefit. With proper selection and maintenance, trees can enhance and function on one property without infringing upon the

rights and privileges of other properties. Trees provide privacy, emphasize views or screen out objectionable views. They reduce glare and reflection, and provide backgrounds, or soften, compliment or enhance architecture.

Trees alter the environment in which we live by moderating climate, conserving water, improving air quality and harboring wildlife. By using trees in the cities, we are able to moderate the heat island effect caused by pavement and buildings in commercial areas. Trees help reduce storm run off and the possibility of flooding. Leaves filter the air we

breathe by removing dust and other particles. By planting trees and shrubs, we return to a more natural, less artificial environment, attracting birds and other wildlife to the area.

Individual trees and shrubs have value, but the variability of species, size, condition and function makes determining their economic value quite difficult. Direct economic bene-

fits are usually associated with energy costs. Air conditioning costs are lower in a tree shaded home. Heating cost are reduced when a home has a windbreak. Trees increase in value from the time they are planted until they mature. Trees are a wise investment of funds since landscaped homes are more valuable than non-landscaped homes. The savings in energy costs and the increase on property value directly benefit each homeowner.

Trees provide numerous aesthetic and economic benefits but also include some costs. You need to be aware that an investment is required for your trees to provide the benefits that you desire. To func-

tion well in the landscape, trees require maintenance. The informed homeowner must do a lot to get the full benefits from their trees. Corrective pruning and mulching will give trees a good start. Shade trees however, quickly grow to a size that may require the services of a professional arborist, who has the knowledge and equipment needed to prune, spray, fertilize and maintain a large tree.



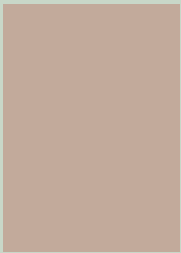
In this Issue:

- The Benefits of Trees
- Grinder: The Big Dogs
- News from the Top!
- Mulch Better
- Fertilization
- Tree Topping



News from the Top

**News & Advice from Gary Allen,
President of Allen's Tree Service**



My name is Gary Allen, over twenty-seven years ago, my wife Diann and I started Allen's Tree Service Inc. We have lived in the St. Charles area for almost thirty years, which has turned out to be a great place to raise our children and estab-

lish our business.

My father and grandfather both worked in the forestry industry so it was only natural that I follow in their footsteps. My son has started showing interest in the tree industry and greatly enjoys the outdoors. Maybe one day he will even follow in my footsteps!

When this business was first started in 1976, it was a struggle. As our work progressed and people started recognizing the Allen's Tree Service name, the company started to grow. As more years passed, we continued to grow even more. Our office staff and the crew are like family to us, and we enjoy the time spent with them at company functions, and even at non-company functions.

Tree care and arboriculture have gone through many changes, and are continuing to change every day. We pride ourselves on staying current with proper tree care, education and safety.

We take great pride in the work we do. We strive to bring our customers the best quality tree care available. We look forward to continuing to be the ONLY tree service company you'll ever need.

Grinders – “The Top Dogs”

The Benefits of Recycling

When it comes to reducing wood and green waste for disposal, mulching or re-sellable products are what we do. Grinders are the top dogs, king of the hill – even if that hill is made of wood chips and shredded mulch. Unlike chippers, grinders are capable of reducing much larger, whole items such as trees, stumps, green waste, pallets, poles, even complete houses.

With our tub grinder, the material to be produced is lowered into a large, open hopper. With different screens and different hammers, most wood waste products can be ground to different consistency's or textures. The wood chips or mulch being ground, can be left on job sites or hauled.

The mulch made with these tub grinders can be re-used for mulching in landscapes, gardens, walkways, and playgrounds. Recycling the wood waste is environmentally beneficial for everyone. The tub grinders have made very positive changes in wood waste materials. The natural uncolored mulch is premium shredded wood mulch that is popular with perennial gardeners, and landscapers. Colored mulch offers a high-end finished look to any landscape design, without the extravagant cost of decorative mulches.

Allen's Tree Service recycles our wood waste products, and other wood waste material. Our recycled wood waste material is either double- or triple-ground, so we can offer our clients one of the highest grades of organic mulch in our area. We provide other tree services from the smallest to the largest utility line clearance companies the opportunity to drop off their wood waste materials for recycling at our convenient location in Wentzville.

Taking Care of Plants, Shrubs and Tree

Sweetgum Balls

In the spring when trees are starting to bloom we get a lot of calls wondering if anything can be done about those dreaded sweetgum balls. Until a few years ago the answer was no. Now there is a chemical named Florel, a nuisance fruit eliminator: It is applied in the month of April, when there is a very limited time window that the trees can be sprayed, because the fruit has to be in the correct stage of development for Florel to be effective. It is a process that must be done yearly, and the more consecutive years it is used, the



greater amount of the reduction of the sweetgum balls produced. To learn more or to get signed up to have your sweetgum trees sprayed with Florel, give us a call at 636-332-5535 or mark the nuisance fruit eliminator on the reply card and return to the office.

Mulch Better

There are three primary purposes for mulching: aesthetics, maintaining moisture for plants roots and reducing weed growth. The benefits of mulching and its effectiveness in improving root development and vigor have been documented for nearly a century. Mulching improves soil aeration and soil structure, may increase soil fertility, and reduce the incidences of some diseases.

Mulch should be applied two to three inches away from the trunk of the tree, at least two inches deep but no more than four inches deep and should NOT be mounded. It should be a minimum of two feet out and as far out under the drip line as possible. Organic natural mulches are best to use for around trees. Plants, shrubs, and trees have been shown to do much better with organic mulch, which offers better temperature buffering during extreme hot or cold weather. The mulch that is produced at Allen's Tree Service, Inc., is double- or triple-ground with our tub grinder. This enables us to offer our clients the highest grades of organic mulch in our area.

Plastic mulch should not be used because it interferes with the exchange of gases between soil and air, which inhibits root growth. Thicker mulch layers five inches or more may also inhibit gas exchange as well. Please call for pricing and delivery information.

Fertilization

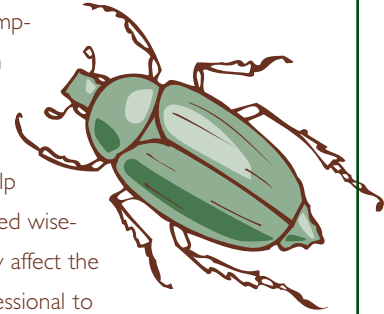
Trees often require fertilization at some point during their life span. Remember, the natural environment for most trees is the forest. The nutrients are continually recycled as leaves and other plant material fall and decompose on the forest floor. When you put a tree in a landscape setting it is usually deprived of these nutrients.

Shade trees, like any other landscape plants will respond to fertilization. Landscape trees may be growing in restricted root zone areas, be surrounded by pavement or compacted soil or even be physically damaged by construction activities. One should realize that the root system is just as important (and delicate) as the above ground parts of the tree.



Some symptoms to look for to see if your trees may need fertilizing are: slow growth rate and low amount of annual growth on twigs and trunk, smaller than normal foliage, off color foliage, increased amounts of dead branches, tip-die back in branches and increased rates of disease and insect problems. Trees that possess these symptoms generally would positively respond to a fertilization treatment.

Fertilizing a tree can increase growth, reduce susceptibility to certain diseases and pests, and can even help reverse declining health. However, if fertilizer is not applied wisely, it may not benefit the tree at all, it may even adversely affect the tree. Fertilizing of shade trees should be done by a professional to ensure the proper type and rate of fertilizer, and that a slow release fertilizer is being used for the entire root system of the tree.



We'd Love to Hear from You!

Allen's Tree Service Inc is happy to assist you with any services you may need more information about. Please cut this out, mark the items you are interested in and mail this to the address below or just give us a call... we look forward to hearing from you.

I am interested in...

- Tree/Limb Removal
- Selective Pruning
- Dead Wooding
- Deep Root Fertilization
- Stump Grinding
- Mulch
- Insect/Disease Control
- Land/Lot Clearing

Additional Questions/Information: _____

Name _____

Street Address _____

City/State/Zip _____

Phone (optional) _____

Allen's Tree Service

2755 W. Pearce Blvd.
Wentzville, MO 63385-3218

(636) 332-5535

www.allenstreeservice.com

Topping Trees

Why We Recommend NOT to Do It

Topping, also known as heading, dehorning, or hat racking, is an unprofessional and unsightly practice, which has not been accepted for the last 25 years. Tree topping is the cutting back of large portions of a tree's canopy to stubs or inappropriately small branches, etc. Not only does topping create weak new growth, it also severely weakens the rest of the tree. A tree company that tops trees probably lacks the expertise to perform the correct procedures and should be

avoided. In fact, the International Society of Arboriculture (ISA), a research and education association of tree care professionals advises the public that a tree company, which advertises topping, should NOT be hired for any work period. At Allen's Tree Service, we go by the recommendations of the ISA on the entire tree care services we offer. To find out more information on why trees should not be topped you can look on line at www.treesaregood.com.

Our company has been serving both residential and commercial clients in St. Charles and St. Louis County for more than 27 years!

We are members of the St. Louis Arborist Association, the Tree Care Industry Association, the St. Charles Chamber of Commerce and the International Society of Arboriculture.

Some of the services we offer include:

- ▶ Tree/limb Removal
- ▶ Selective Pruning
- ▶ Dead Wooding
- ▶ Deep Root Fertilization
- ▶ Power Stump Grinding
- ▶ Insect/Disease Control
- ▶ Emergency Storm Service



SPRING INTO ACTION!

Spring is almost here, are your trees ready? Now is a good time to do an inspection of the trees and shrubs in your landscape, looking for any broken limbs or branches that might have been damaged during winter. Check for rubbing and crossing branches in the crown of the tree.

Spring in our area usually consists of stormy weather, checking your trees and shrubs NOW may help prevent future storm damage. Trees that are routinely maintained are less susceptible to damage. So, take a good look at your trees and get ready for spring.



2755 W. Pearce Blvd.
Wentzville, MO 63385-3218
(636) 332-5535

"Branchin' Out" is published quarterly to bring you information that will make your life easier and more enjoyable. We would appreciate it if you would pass this newsletter along to friends and relatives who might be in need of any of our services. If you have any questions, comments, suggestions, or would like to request an additional issue of "Branchin' Out" please call or visit us online.

www.allenstreeservice.com

